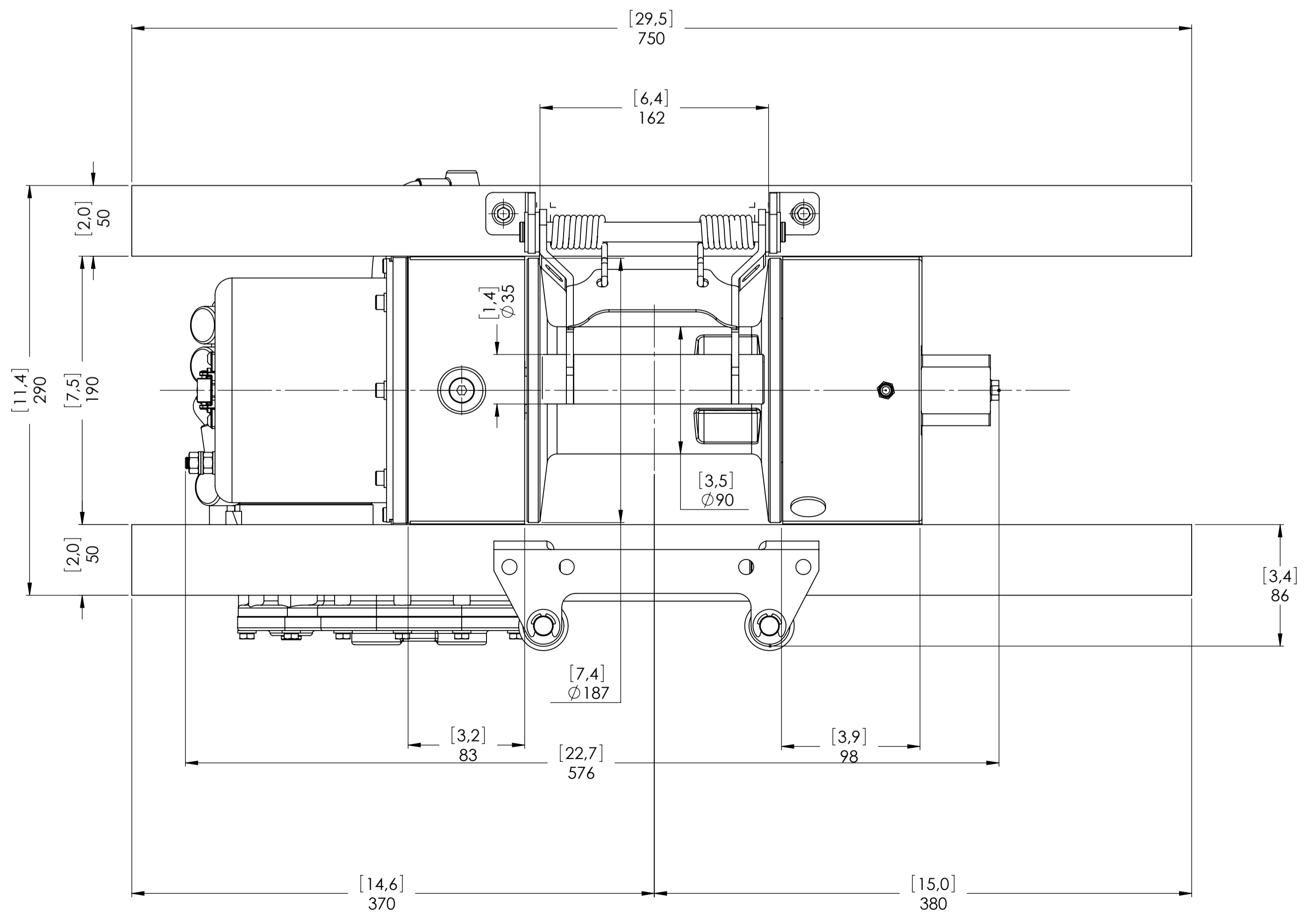
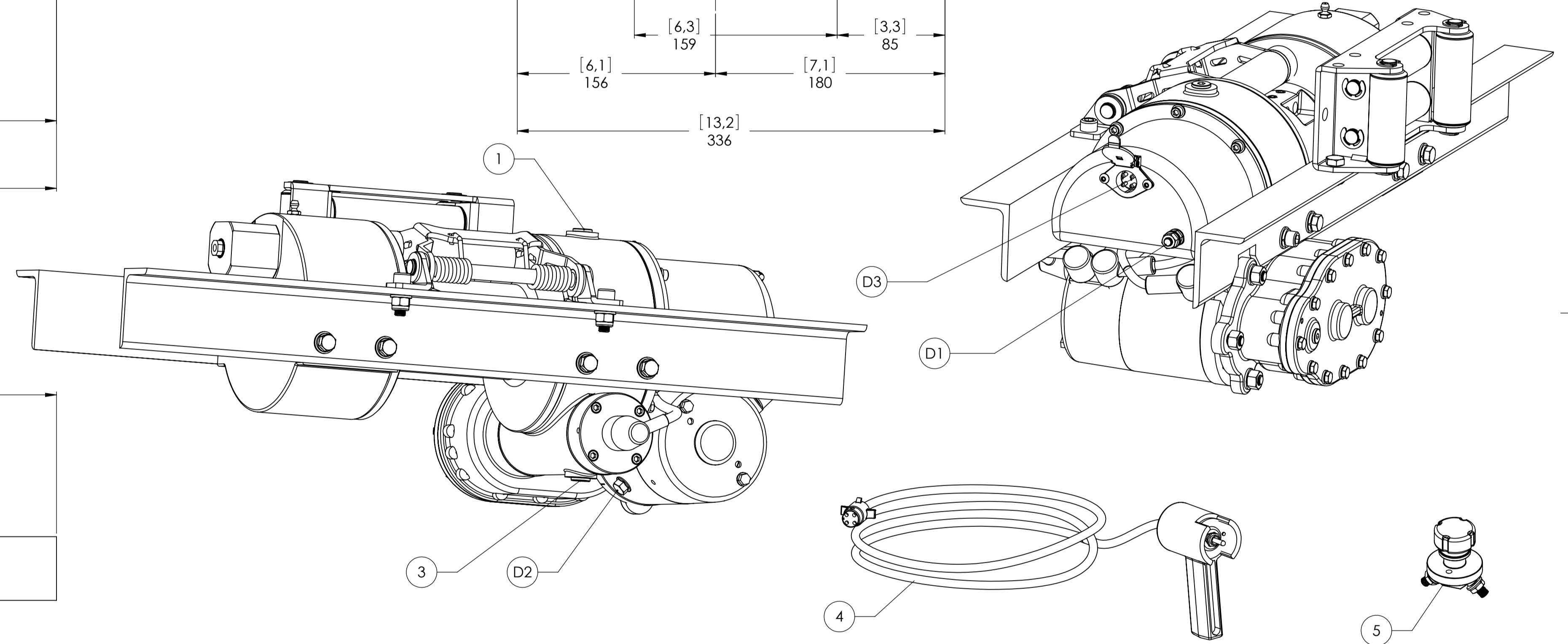
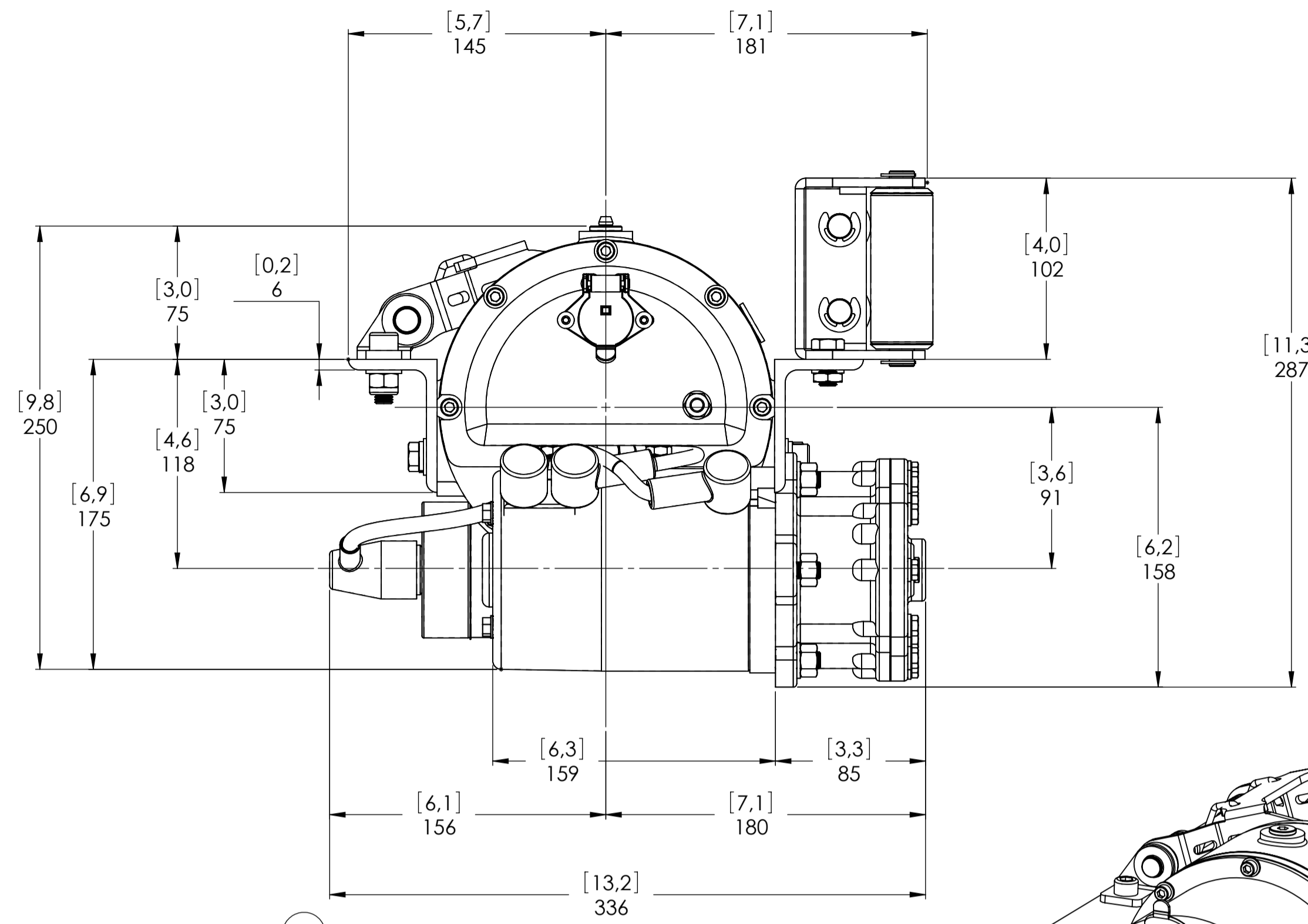
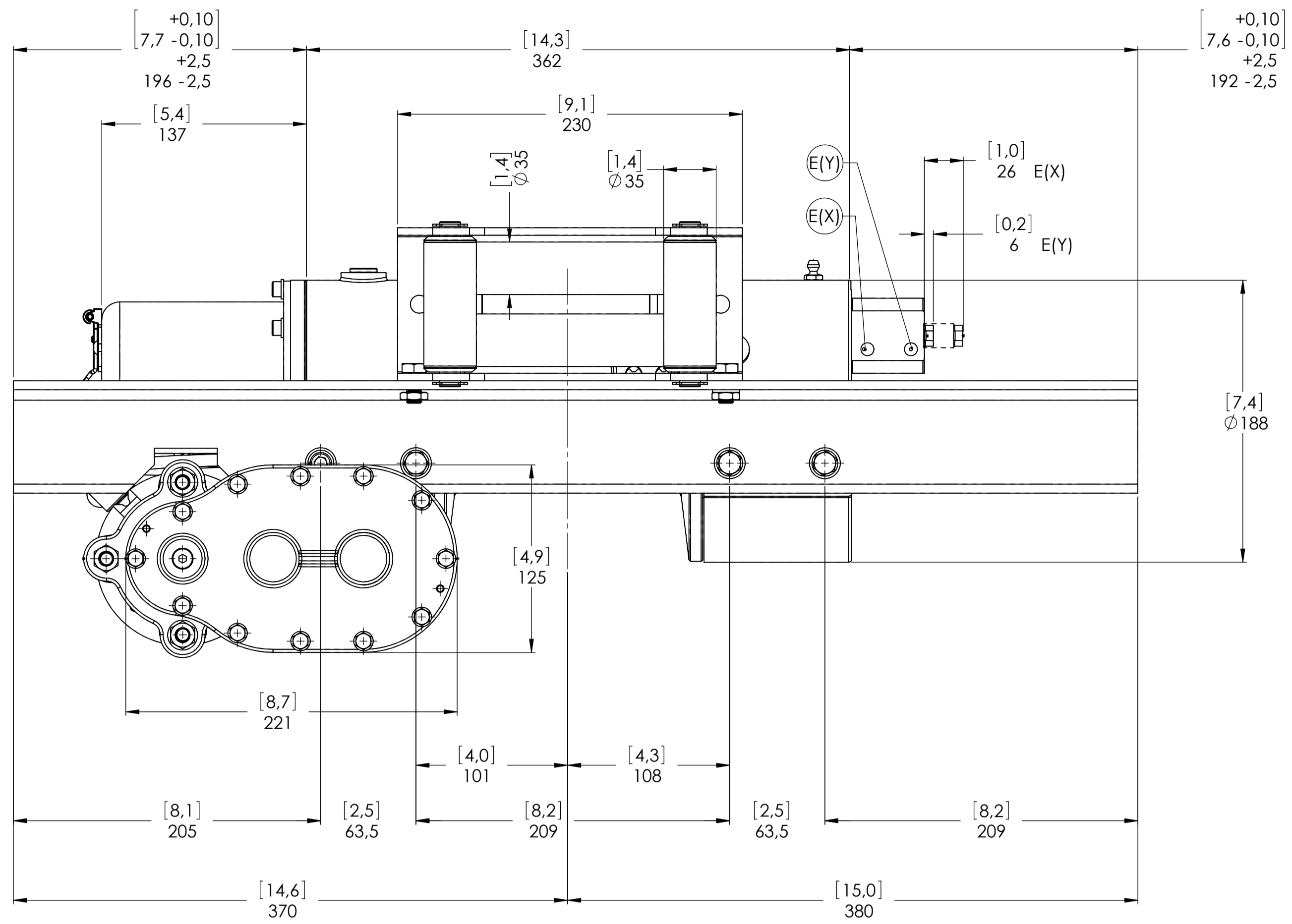
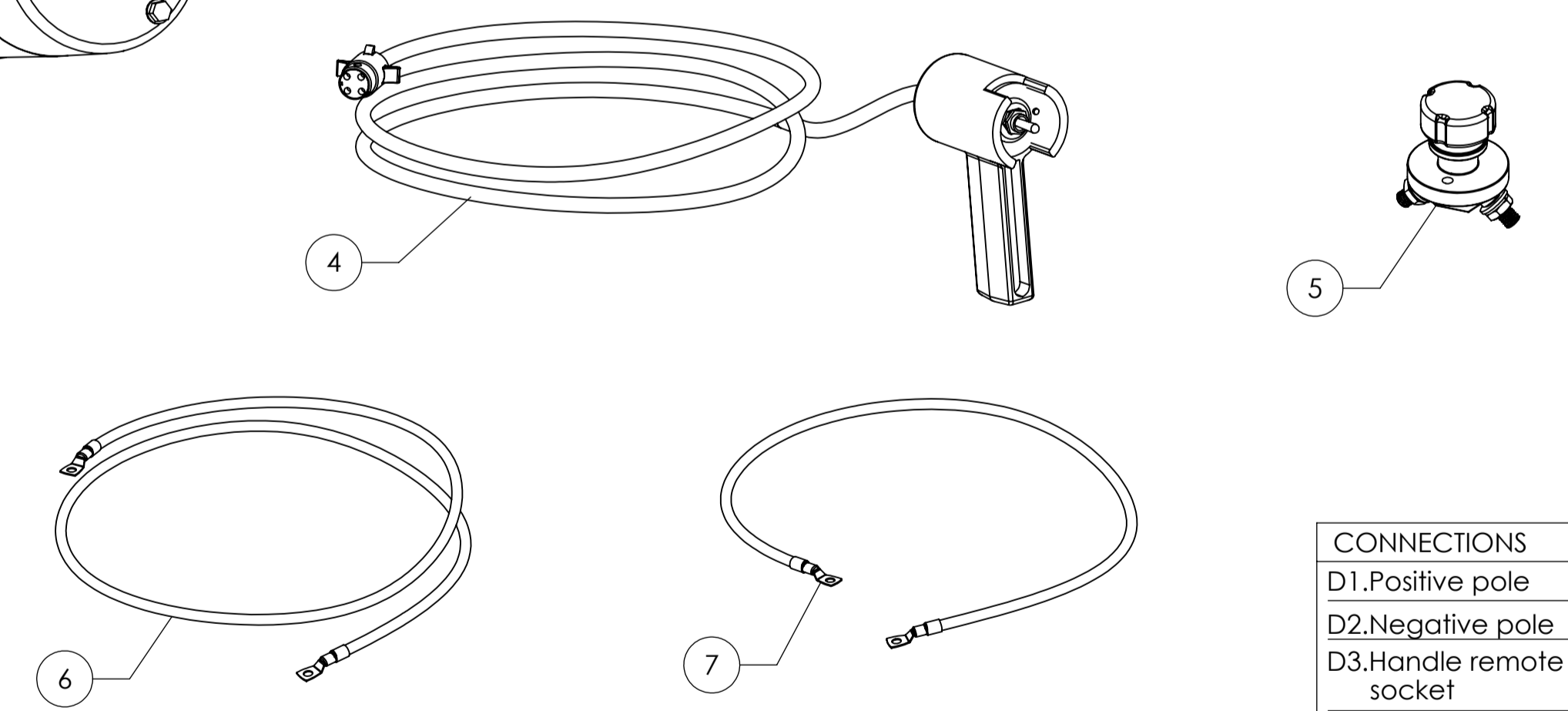


Machinery Directive 2006/42/CE
EN 14492-1



WINCH DELIVERED WITH:
 4-Handle remote control with cable(4 mt)
 5-Battery switch
 6-Electric cable(1,5 mt)
 7-Electric cable(0,5 mt)



CONNECTIONS	
D1.Positive pole	M8
D2.Negative pole	5/16"
D3.Handle remote control socket	
E (X) DISENGAGED	1/8"
E (Y) ENGAGED	1/8"

WINCH MODEL	JEC	WINCH GROUP	WORM GEAR
Pulling capacity	5100 Kgs	Date	Modification
Max current	180 A		
Speed line with no load First layer	4,5 Mt./Min.	DANGEROUS: Do not use winch to lift support or transport personnel.	
Speed line max. rated load First layer	0,6 Mt./Min.		
Gear ratio	470 : 1		
Electrical motor	MUX 24V DC		
Voltage	24 V		
Drum size	162 mm		
Drum clutch	Air operated		

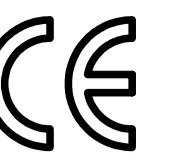
PLUGS	
1.Fill	3/8"
2.Level	3/8"
3.Drain	3/8"
SCALE 1: 2.5	
WEIGHTS	
Winch(without oil)	39,5 Kg
Standard Roller fairlead	-----
Rope tensioner	1,8 Kg
CODE	JEC5124VCEAGRPL



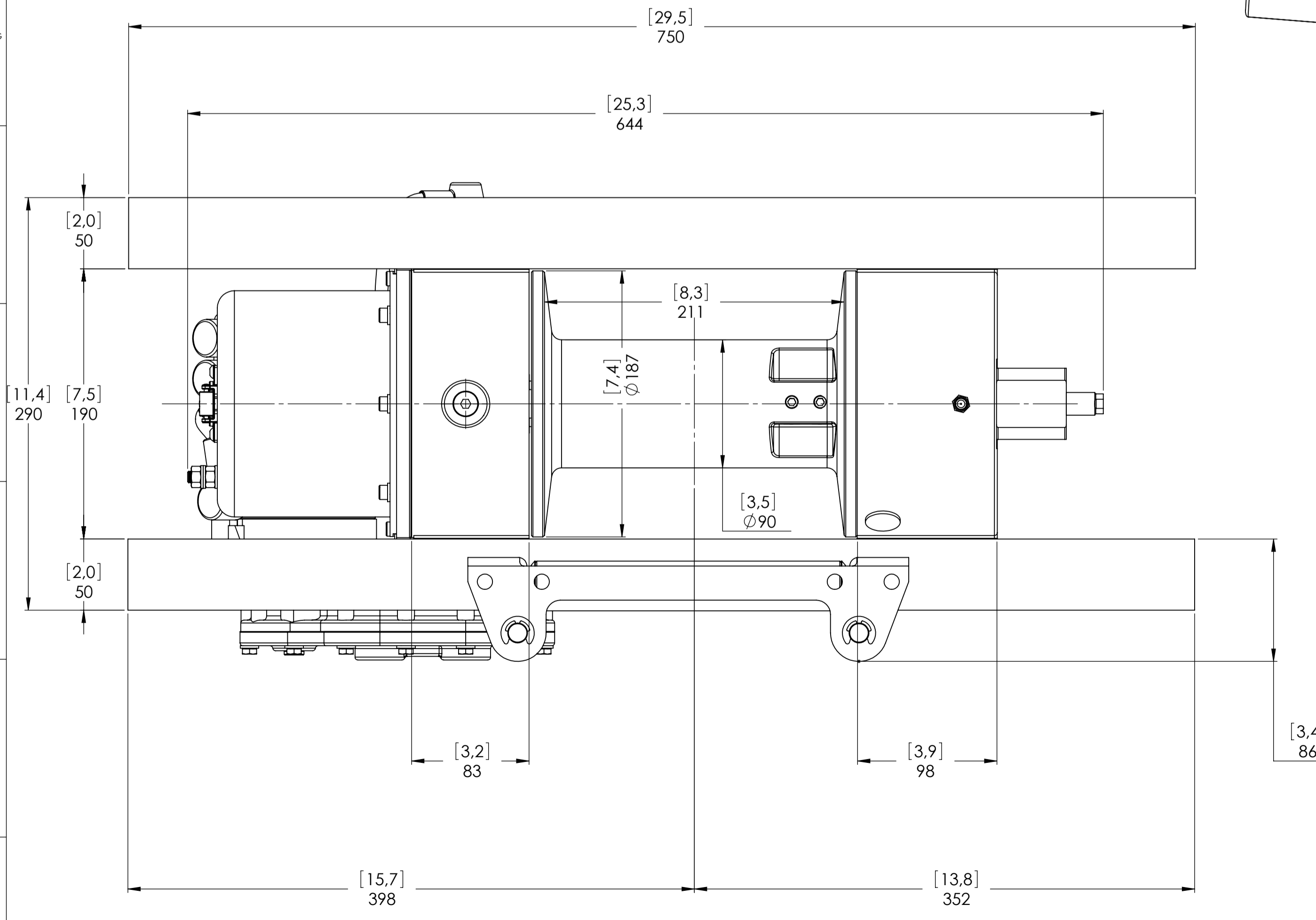
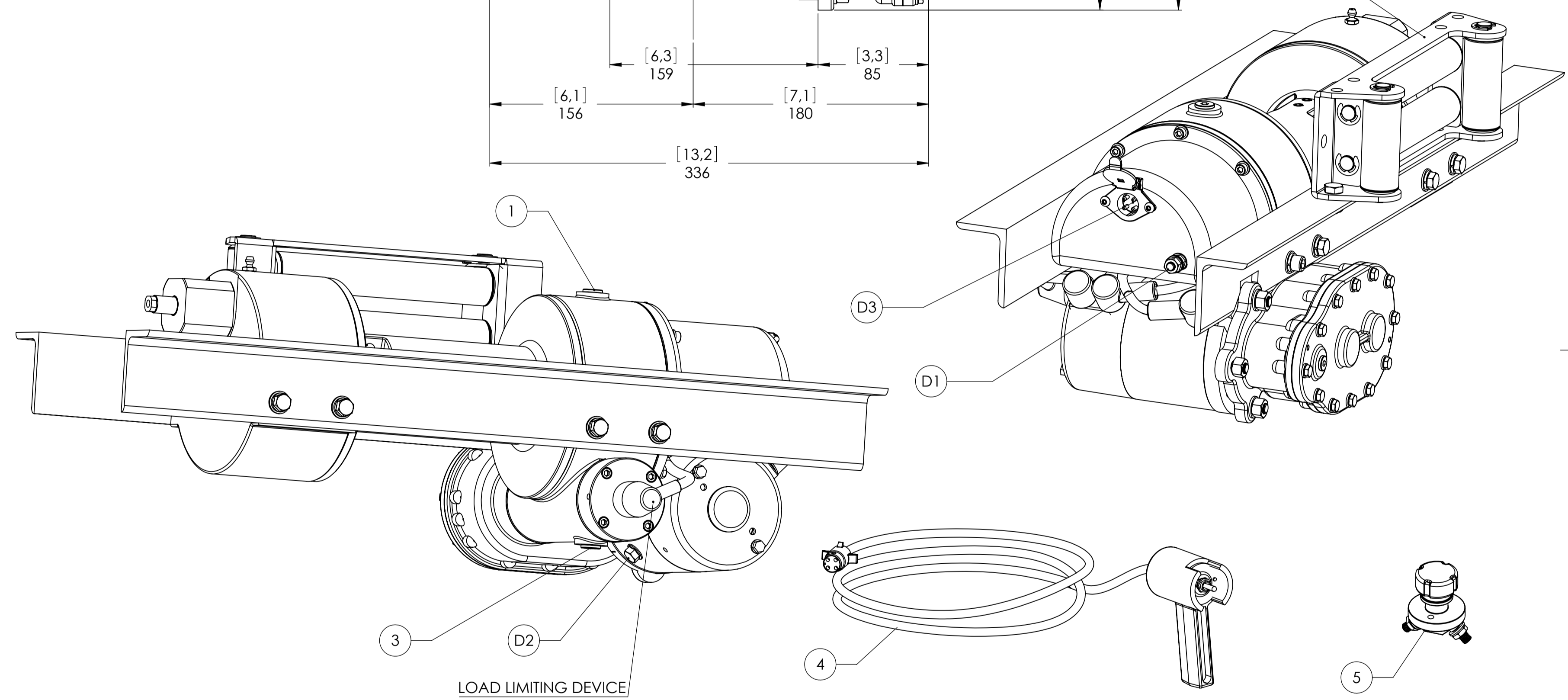
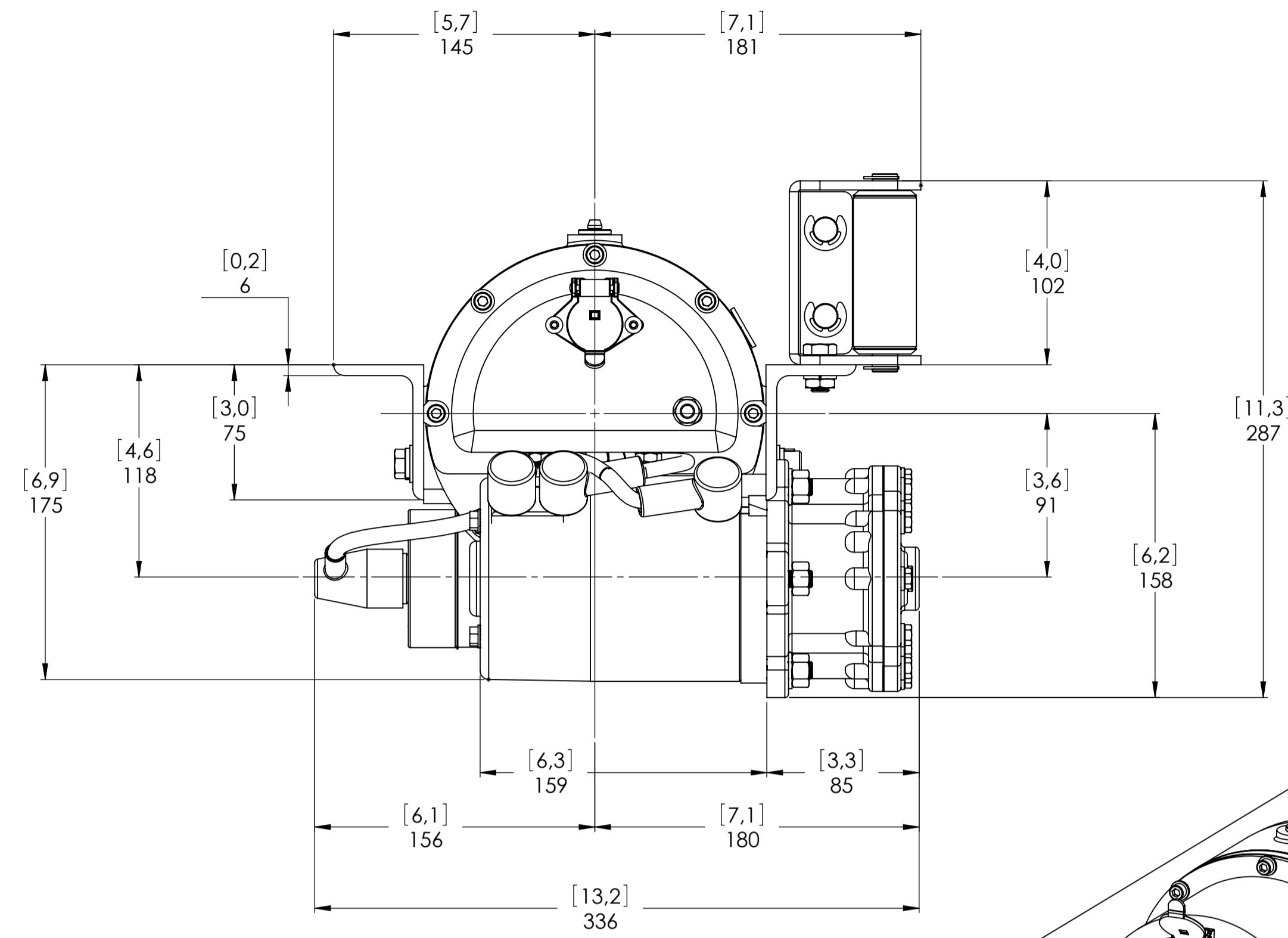
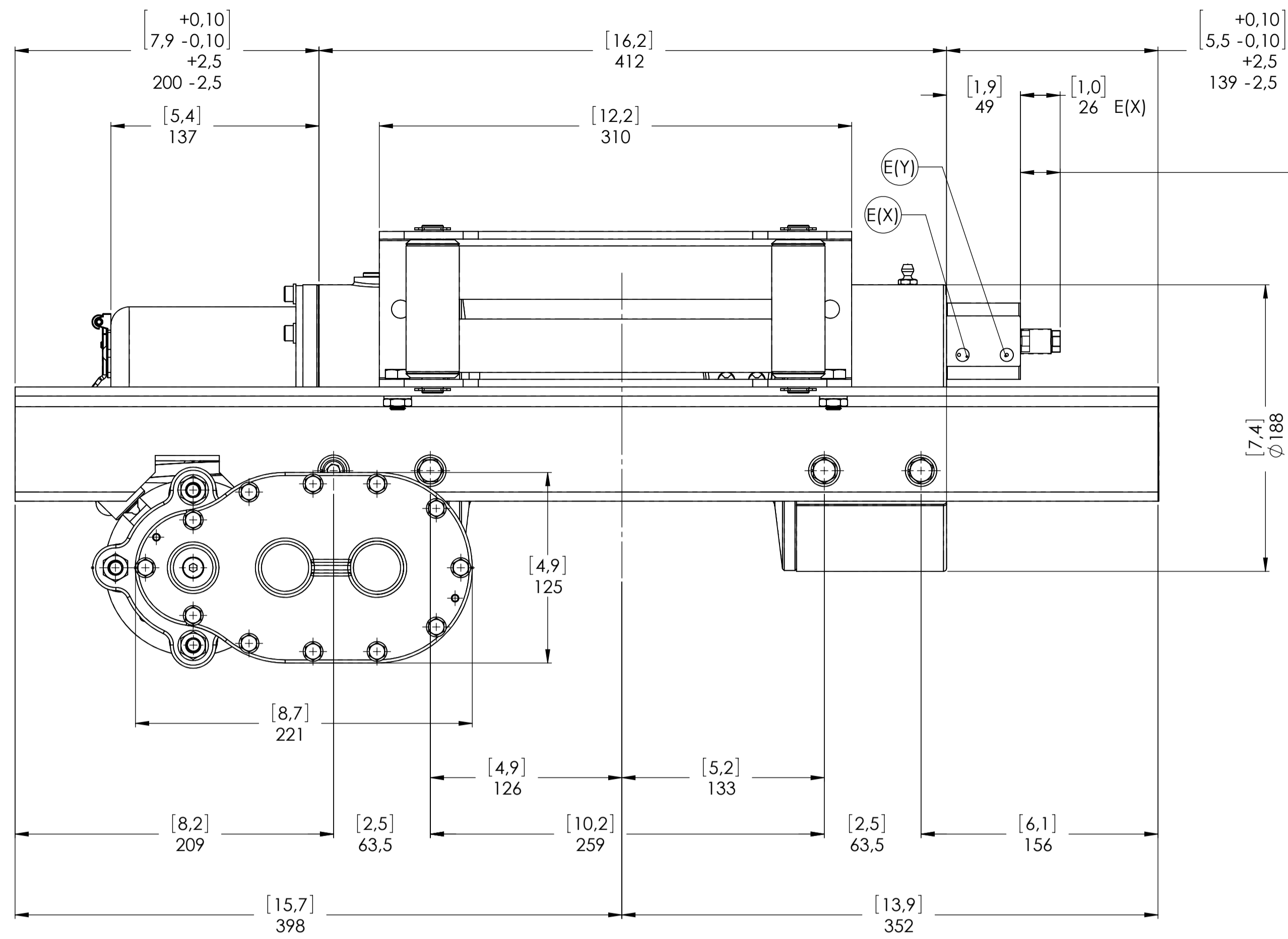
The Quality is Transparent

VIME Industrial reserves the right to improve its products through changes in designed or materials as it may seem desirable without notice

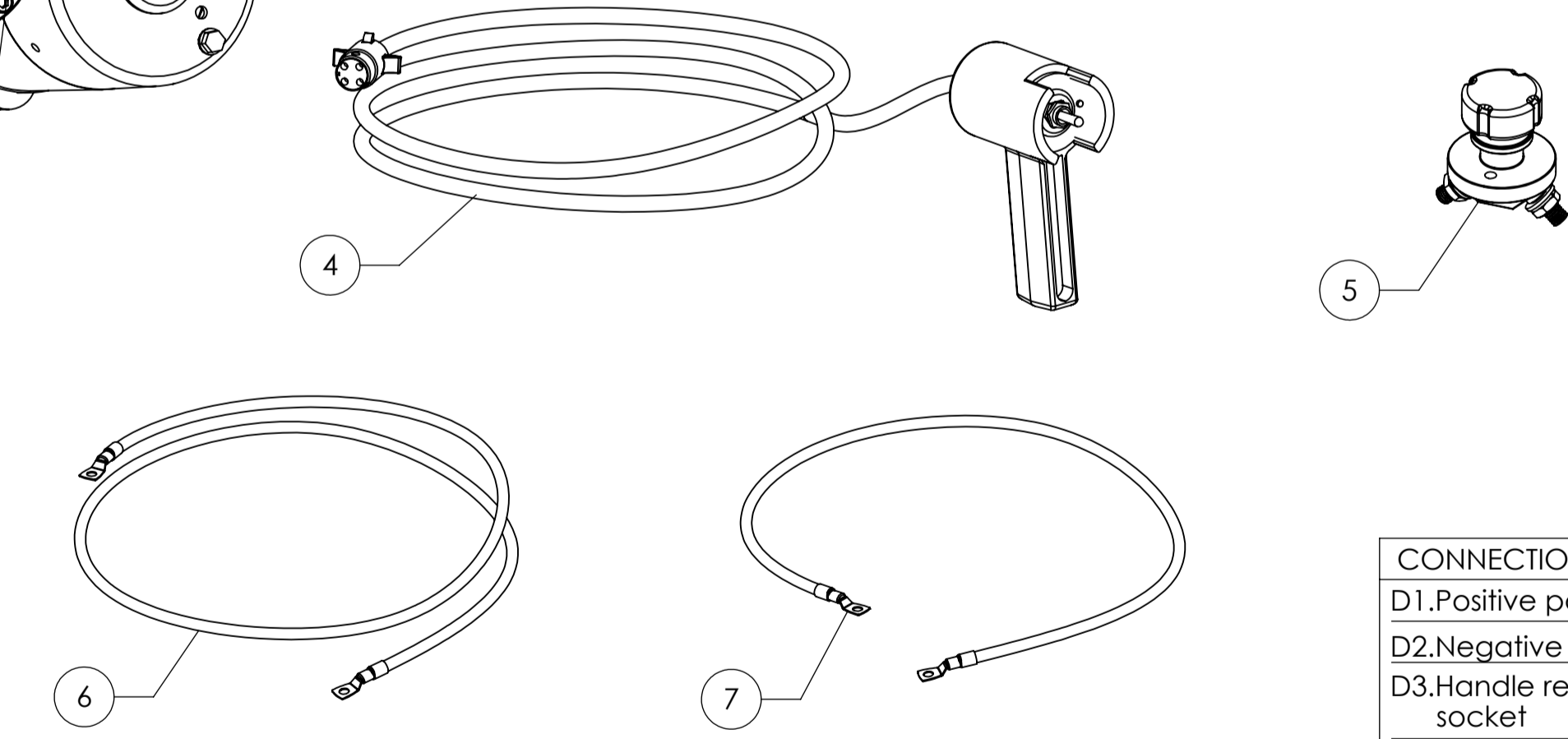
DATE 24/06/2015



Machinery Directive 2006/42/CE
EN 14492-1



WINCH DELIVERED WITH:
 4-Handle remote control with cable(4 mt)
 5-Battery switch
 6-Electric cable(1,5 mt)
 7-Electric cable(0,5 mt)

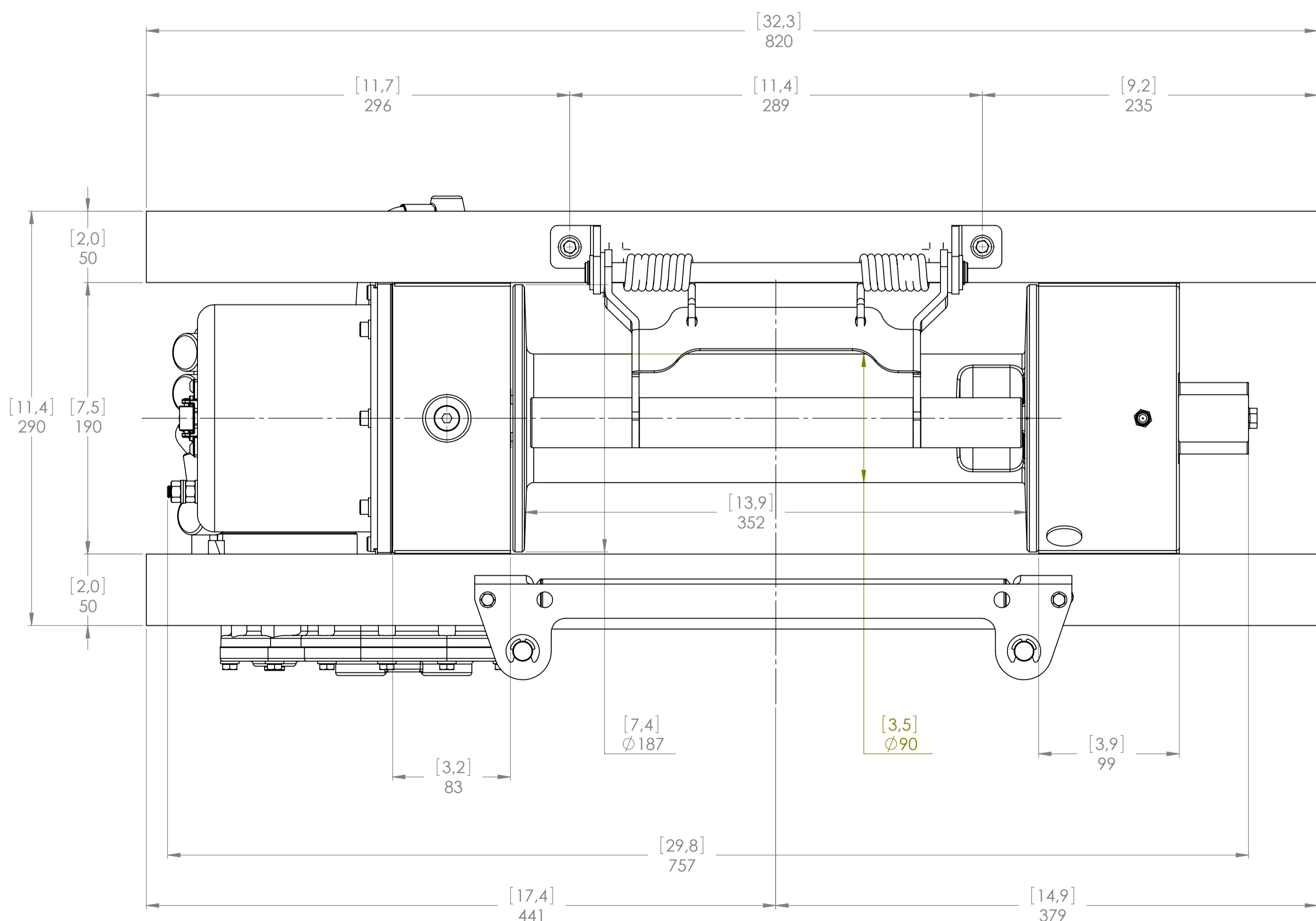
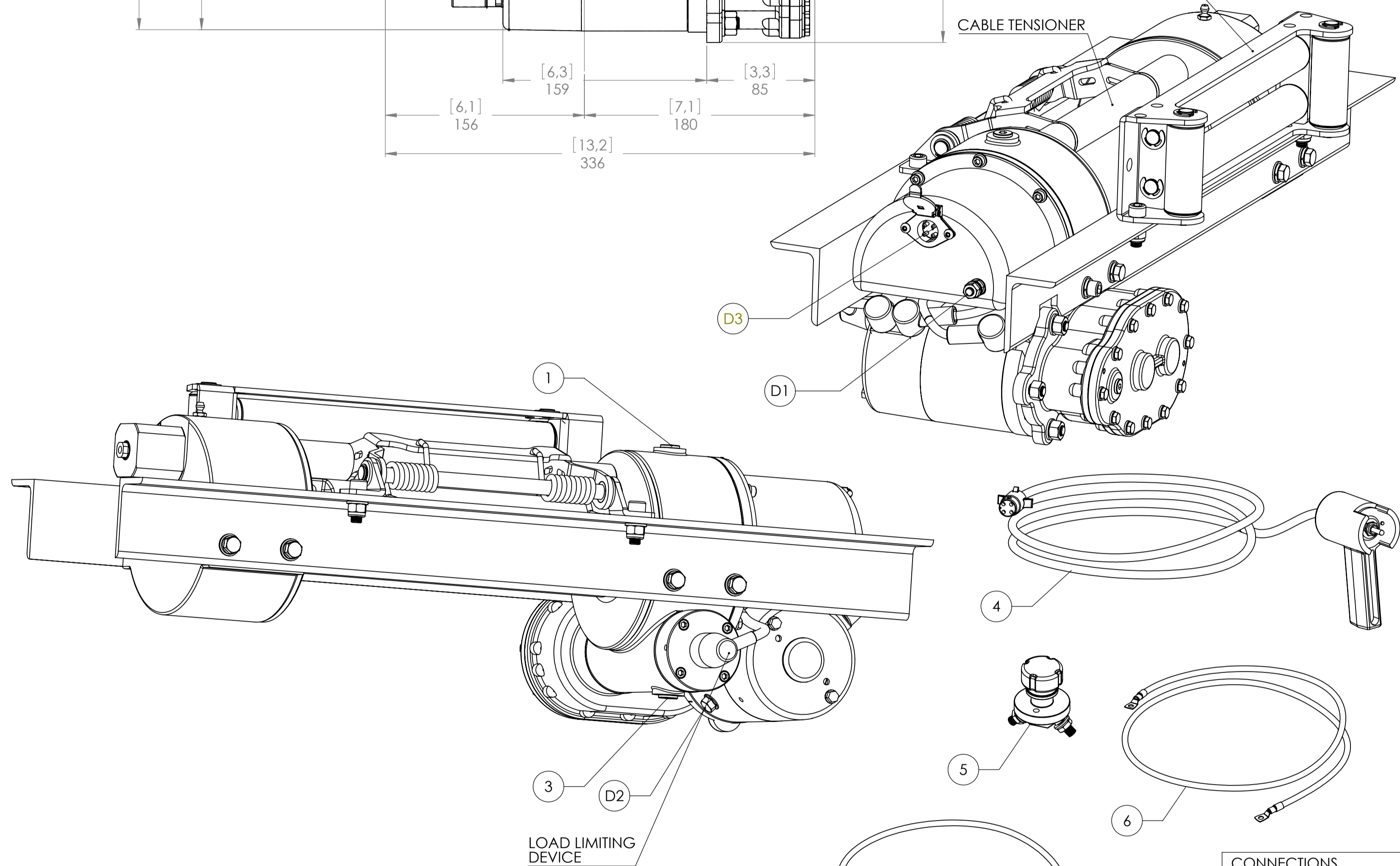
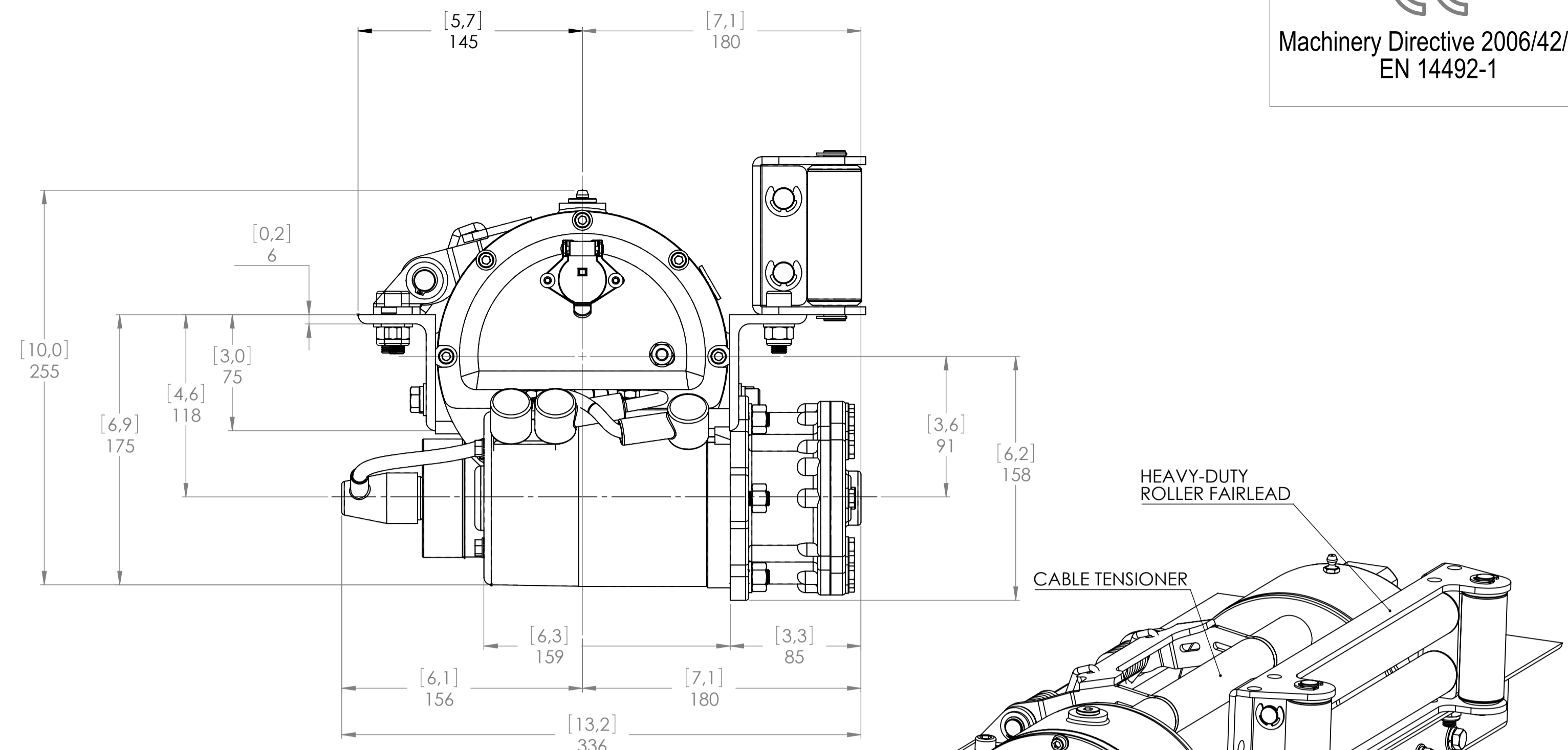
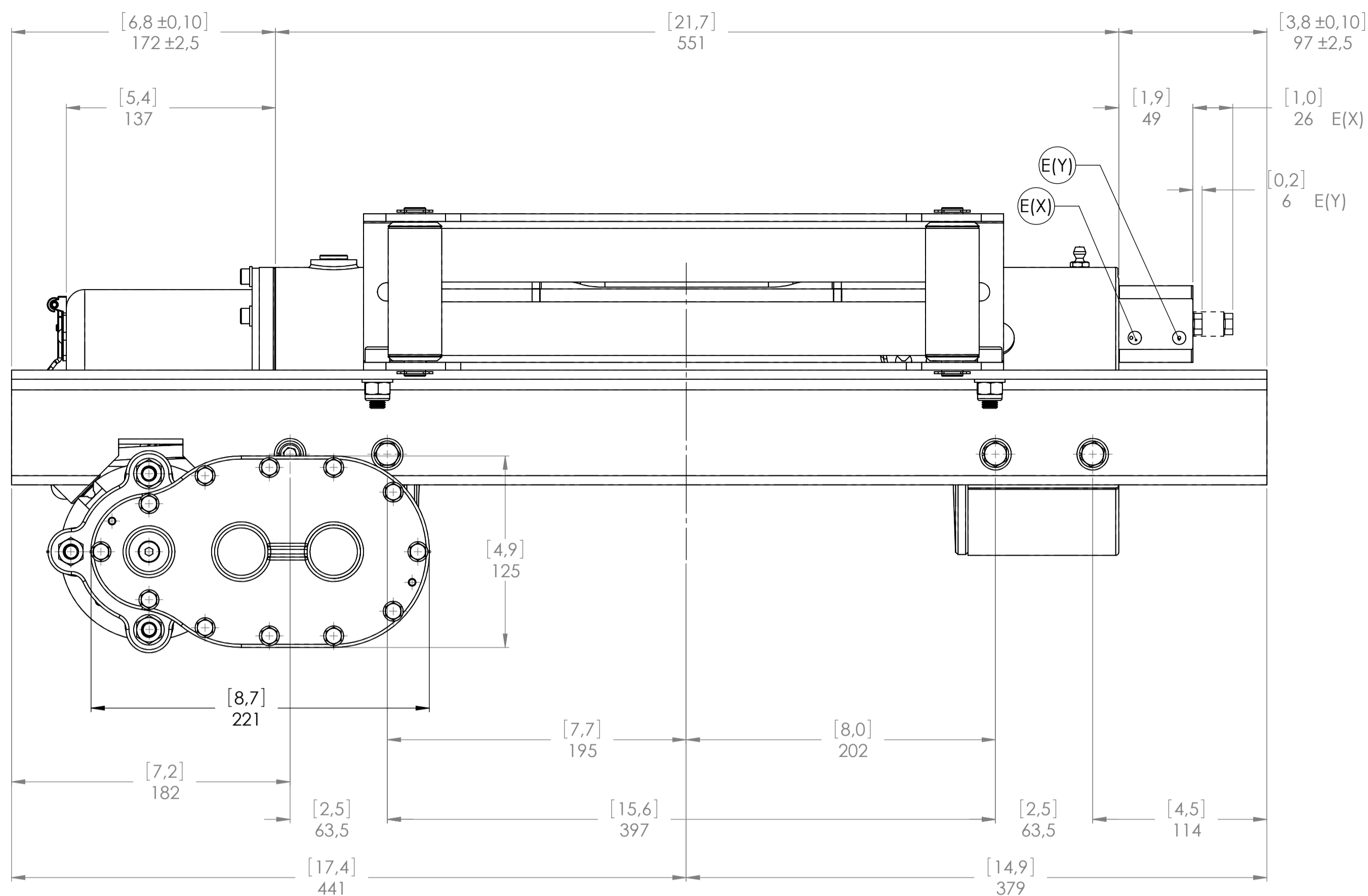


CONNECTIONS	
D1.Positive pole	M8
D2.Negative pole	5/16"
D3.Handle remote control socket	
E (X) DISENGAGED	1/8"
E (Y) ENGAGED	1/8"

WINCH MODEL	JEM	WINCH GROUP	WORM GEAR
Pulling capacity	5100 Kgs	Date	Modification
Max current	180 A	 DANGEROUS: Do not use winch to lift support or transport personnel.	
Speed line with no load First layer	4,5 Mt./Min.		
Speed line max. rated load First layer	0,6 Mt./Min.		
Gear ratio	470 : 1	PLUGS	
Electrical motor	MUX 24V DC	1.Fill	3/8"
Voltage	24 V	2.Level	3/8"
Drum size	211 mm	3.Drain	3/8"
Drum clutch	Pneumatic	SCALE 1: 2.5	
 Funo - Bologna (Italy) www.vimeindustrial.com		WEIGHTS	
The Quality is Transparent		Winch(without oil) 40,5 Kg	
VIME Industrial reserves the right to improve its products through changes in designed or materials as it may seem desirable without notice		Standard Roller fairlead -----	
DATE 24/06/2015		Rope tensioner -----	
		CODE JEM5124VCEAGRL	



Machinery Directive 2006/42/CE
EN 14492-1



WINCH DELIVERED WITH:
 4-Handle remote control with cable(4 mt)
 5-Battery switch
 6-Electric cable(1,5 mt)
 7-Electric cable(0,5 mt)

CONNECTIONS	
D1.Positive pole	M8
D2.Negative pole	5/16"
D3.Handle remote control socket	
E (X) DISENGAGED	-----
E (Y) ENGAGED	-----

WINCH MODEL	JEL	WINCH GROUP	WORM GEAR	PLUGS
Pulling capacity	5100 Kgs	Date	Modification	1.Fill 3/8"
Max current	180 A			2.Level 3/8"
Speed line with no load First layer	4,5 Mt./Min.	DANGEROUS: Do not use winch to lift support or transport personnel.		3.Drain 3/8"
Speed line max. rated load First layer	0,6 Mt./Min.			SCALE 1: 2,5
Gear ratio		470 : 1		WEIGHTS
Electrical motor		MUX 24V DC		Winch(without oil) 43 Kg
Voltage		24 V		Standard
Drum size		350 mm		Roller fairlead -----
Drum clutch		Air operated		Rope tensioner 2,5 Kg
 Funo - Bologna (Italy) www.vimeindustrial.com The Quality is Transparent			VIME Industrial : reserves the right to improve its products through changes in designed or materials as it may seem desirable without notice	DATE 24/06/2015
				CODE JEL5124VCEAGRPL

1.4.1 JEC-JEM-JEL 5100 24V CE TECHNICAL DATA



RATIO	WIRE ROPE SIZE [MM]	LAYER	LINE PULL [KG]	WIRE ROPE MINIMUM BREAKING LOAD EN 14492-1 [KG]
1/470	10*	1	5.100	10.200
		2	4.250	
		3	3.645	
		4	3.190	
		5	2.835	

	WIRE ROPE CAPACITY [MT]	WIRE ROPE CAPACITY EN 14492-1 [MT]	MAX. WIRE ROPE CAPACITY [MT]
	10 [MM]	10 [MM]	10 [MM]
JEC	20	24**	33
JEM	30	32**	44
JEL	40	55**	74

WIRE ROPE QUANTITY	LAYER	DRUM DIAMETER Ø [MM]	DRUM SIZE JEC = 162 MM		DRUM SIZE JEM = 211 MM		DRUM SIZE JEL = 350 MM	
			WIRE ROPE ON LAYER [MT]	WIRE ROPE QUANTITY [MT]	WIRE ROPE ON LAYER [MT]	WIRE ROPE QUANTITY [MT]	WIRE ROPE ON LAYER [MT]	WIRE ROPE QUANTITY [MT]
			10 [MM]	10 [MM]	10 [MM]	10 [MM]	10 [MM]	10 [MM]
	5	180	8,6	33,4	11,4	44,2	19,2	74,8
	4	160	7,6	24,8	10,1	32,8	17,1	55,5
	3	140	6,7	17,2	8,8	22,7	15,0	38,5
	2	120	5,7	10,5	7,6	13,9	12,8	23,5
	1	100	4,8	4,8	6,3	6,3	10,7	10,7
	0	90	-	-	-	-	-	-

PERFORMANCE CHARTS AT THE 1ST LAYER

RATIO	NO LOAD		900 [KG]		1800 [KG]		2700 [KG]		3600 [KG]		4500 [KG]		5100 [KG]	
	LINE SPEED [MT/MIN]	CURRENT [A]	LINE SPEED [MT/MIN]	CURRENT [A]	LINE SPEED [MT/MIN]	CURRENT [A]	LINE SPEED [MT/MIN]	CURRENT [A]	LINE SPEED [MT/MIN]	CURRENT [A]	LINE SPEED [MT/MIN]	CURRENT [A]	LINE SPEED [MT/MIN]	CURRENT [A]
1/470	4,5	30	2,1	50	1,5	85	1,2	110	1,0	135	0,7	160	0,6	180

NOTE

Specifications are subject to change without notification and without incurring obligation. Specifications in this publication are theoretical and may vary depending on electrical system, environment, etc.

NOTE

*Wire rope size must be respected. Recommended wire rope min. tensile strength 2160 N/mm².
Wire rope minimum breaking load must be at least double of winch max. pulling capacity.

** Max. wire rope capacity according with EN 14492-1.

1.4.2 JEC-JEM-JEL 5100 24V CE WINCH PERFORMANCE CHARTS

LINE PULL-FIRST LAYER [KG]

